

# COMMUNITY *impact*

## 2021 Employee Philanthropy Engagement Report



**31**

Employees serve on one or more nonprofit board of directors

**91%**

Gibson employees volunteer

**124**

Nonprofits benefited from Gibson volunteer service

**54%**

Management positions held by women leaders

**GTO**

Unlimited PTO ("Gibson Time Off") and unlimited volunteer time off

**6,519**

Hours volunteered at nonprofits by Gibson in 2021

Gibson invested over **\$1.4 million dollars** in our local communities in 2021.

**\$226,036**

Contributions donated by Gibson corporate

**\$551,154**

Contributions donated by Gibson employees to 151 nonprofits

**\$186,052**

Value of 6,519 volunteer service hours donated to nonprofits

**\$478,300**

Raised by 25 Gibson employees for community organizations



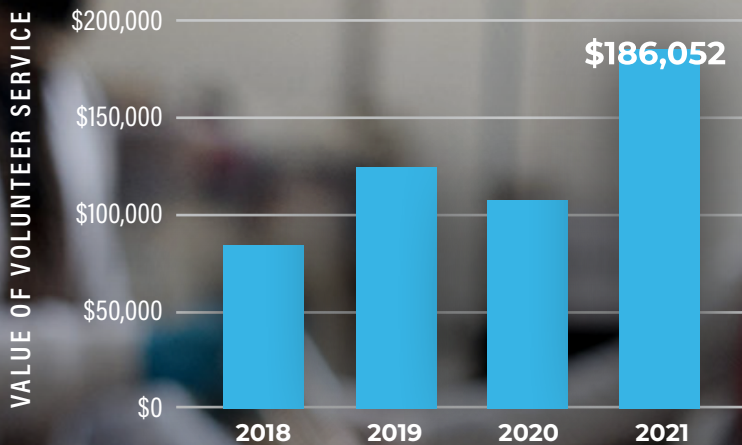
**Volunteer hours increased 71% in 2021 over 2020.**



Gibson employees are nearly **3x more likely to volunteer** than the adult U.S. population.



# More than just stats.



These numbers have *impact.*

**\$28+**  
Gibson  
Minimum  
Wage

**93**  
Employees volunteer  
an average of 93  
hours per year



## Diversity Commitment & ISU Scholarship Endowments

Beginning in the 2020-2021 academic year, our scholarships prioritize supporting minority and female students in the insurance and risk management program. We are also putting a renewed focus on intentionally connecting with minority students at Indiana State to share the opportunities in our industry and talk about the Gibson scholarship. Click or scan the QR to learn more.

SCAN ME



CLICK ME

**We are responsive to the needs of our communities.**

**100% of employees agree that Gibson is committed to the greater good of the community.**

**88%**

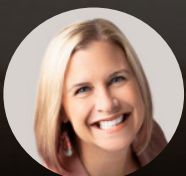
of Gibson employees feel more connected to community needs through COVID-19 related volunteer service and donations.

**\$3,600**

donated to 6 nonprofits directly by Gibson employees for COVID-19 relief efforts.

**71%**

of Gibson employees agree that Gibson took additional steps during the COVID-19 pandemic in 2021 to support the communities they serve.



"Since our founding in 1933, the spirit of servant leadership has been at the core of what we do at Gibson every single day. Our company values match our fundamental beliefs, and a strong giving strategy is at the core of these beliefs. It has been tremendous to see the impact Gibson has had on hundreds of nonprofits, and by building a sustainable, philanthropic brand, we will continue to honor the giving spirit our company was established upon."

**BECKY BECKMAN, PRINCIPAL | DIRECTOR OF MARKETING**



# The joy of giving.

Focused on personal, local connections.

**68**

Number of employees making private contributions

**45%**

Percent of employees making private contributions

**\$551,154**

Total amount of private contributions

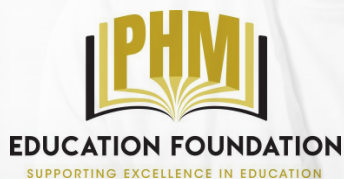
**\$4,500**

Average contributed by employee donors

**151**

Number of nonprofits receiving private contributions

## Select private charitable contribution recipients:



## Community nonprofits supported through employees volunteerism, fundraising, or direct contributions from Gibson or our employees:

4Kids of South Florida  
525 Foundation  
Alternatives of Kalamazoo  
Alzheimer's Association  
American Cancer Society  
American Foundation for Suicide Prevention  
American Heart Association  
American Legion Post 1111  
Ancilla College of Marian University  
Arts United  
ASPCA  
Associated Builders and Contractors  
Autism Speaks  
Bags of Hope  
Bardwell Aquatic Center  
Big Brothers Big Sisters  
Bittersweet Elem  
Boys & Girls Club of Elkhart County  
Boys & Girls Club of Marshall County  
Boys & Girls Club of St. Joseph County  
Boys & Girls Clubs of Indianapolis  
Bre's Run  
BZA Board - Plymouth  
C.A.R.E. Inc.  
Calvary Chapel of Kalamazoo Valley  
Camp Eberhart Alumni Association  
Catholic Diocese of Fort Wayne-South Bend  
Cedar Road Missionary Church  
Center for Hospice  
Center for Suicide Prevention  
Center for the Homeless  
Chain O'Lakes State Park  
Child & Parent Services (CAPS)  
Children With Hair Loss  
Christ Child Society  
Christ Fellowship Church Missions Team  
Christ the King Catholic Church  
City of South Bend  
City of Westfield  
Community Foundation of Elkhart County  
Community Harvest Food Bank  
Construction Financial Management  
Corpus Christi School and Parish  
Crossroads Community Church  
Cru  
Cultivate Food Rescue  
Dance Marathon  
David's Courage  
Delta Sigma Phi Eta Upsilon  
Destiny Rescue  
Disable American Veterans  
Dismas House  
Donaide Foundation  
Dove House  
Eagle Lake Triathlon  
East Allen County Schools  
Edwardsburg Community Church  
Edwardsburg Public Schools  
Family & Children's Center  
Family Justice Center  
Far Reaching Ministries  
Fellowship of Christian Athletes  
First Priority of South Florida  
Food Bank of Northern Indiana  
FOP Lodge #155  
Forgiven Church  
Fort Wayne Children's Zoo  
Fort Wayne Running Club  
Girl Scouts  
Gleaners Food Bank  
Goodwill  
Grand Valley State University  
Green Bridge Growers  
Habitat for Humanity  
Haitian Bible Works  
Hello Gorgeous  
Hickory Elementary School  
Hobart Assembly  
Hockey Ministries International  
Holy Cross Association  
Holy Cross School  
Homebound Meals  
Hope Rescue Mission  
House of Prayer  
Humane Society of St. Joseph County  
Indiana State Fair  
Indiana State University  
Indianapolis Symphony  
InterChurch Pantry  
Jaxon William Augustus Swank Foundation  
Jewish Federation of St. Joseph Valley  
Junior Achievement  
Junior League of South Bend  
K-Love  
Kelly Cares Foundation  
Kingsway Christian Church  
LaVille Schools  
Life Center  
Link to Hope  
Logan Center  
Malawi Matters  
Marian High School  
Marshall County 4-H  
Marshall County Community Foundation  
Marshall County Conservation Club  
Marshall County Council on Aging  
Marshall Traditional School  
Mental Health Awareness  
Michiana Family Center  
Michiana Pet Therapy  
Michiana Soccer Association  
Michiana Veg Fest  
Michigan Police Unity Team  
Michigan State University  
Milk Bank of Indianapolis  
Missional Chaplains  
Morris Performing Arts Center  
MS Society  
MSA Soccer  
MYWAY Southwest Michigan  
Neighborlink  
New Start Home  
Nfluence Church  
Noblesville Youth Soccer  
North Leo Mennonite Church  
Northeast Indiana Base Community Council  
Opportunity Enterprises  
P-H-M Education Foundation  
Parkside Bible Church  
Penn High School  
People Working Cooperatively  
Pet Refuge  
Plymouth Fire Department  
Plymouth Police  
Plymouth Schools  
Plymouth Volunteer Fire Dept.  
Plymouth Wesleyan Church  
Plymouth Youth Football league  
Portage Township Schools  
Potawatomi Zoo  
Queen of Peace Parish  
REAL Services  
Recover Michiana  
Rees Theater Fund  
Religious Communities  
Right to Life  
Riley Children's Hospital  
Ronald McDonald House Charities of Michiana  
Saint Joseph Catholic Church  
Saint Joseph Montessori School  
Saint Thomas More Academy  
Salvation Army  
School on Wheels  
Science Central  
Sheltering Wings  
Sinai Synagogue  
Soccer Zone  
South Bend Education Foundation  
South Bend Regional Chamber  
South Bend Tri Kappa  
Southold Educational Foundation  
Special Olympics  
St Michael's Home and School  
St. Anthony of Padua Church/School  
St. Baldrick's  
St. Bayo Church  
St. Jude  
St. Margaret's House  
St. Matthew Cathedral and School  
St. Michael School  
St. Michael's Church  
Susan G Komen Foundation  
Susie's Place  
Tangram  
Thelma Schrock Homestead  
Thin Blue Line  
Tindley School  
TLG Ministries  
Trevor Slot Foundation  
Tunnels to Towers  
United Health Services of St. Joseph County  
United Pentecostal Church  
United Way of Allen County  
United Way of Whitley County  
University of Notre Dame  
Veterans Groups  
Victory Church  
Victory Sports  
Vineyard Church  
Visiting Nurse  
Wellness Council of Indiana  
West Catholic High School  
West Michigan Trails and Greenways  
Windmoor Educational Foundation  
Women in Business After Hours  
Women's Shelter  
Wounded Warrior Project  
YMCA Camp Crosley  
YMCA of Greater Indianapolis  
YMCA of Greater Michiana  
Young Professionals Network (YPN)  
Youth Services Bureau of St. Joseph County  
YWCA of Saint Joseph County

### ABOUT THIS REPORT

This is the fourth annual Corporate Social Investment Impact Report produced by Gibson, a Business Insurance Top 100 U.S. Broker, and includes financial information related to 2021 data. Visit [www.thegibsonedge.com/impact](http://www.thegibsonedge.com/impact) for more information.

### ACKNOWLEDGMENTS

Caitlin Smith, Blackbird Philanthropy Advisors  
Becky Beckman, Gibson  
Rachel Clemans-Bonnell, Gibson  
Joel Mattern, Gibson

